

Royal Road Arabia

Geological Figure Library



Royal Road
Arabia

www.royalroadminerals.com

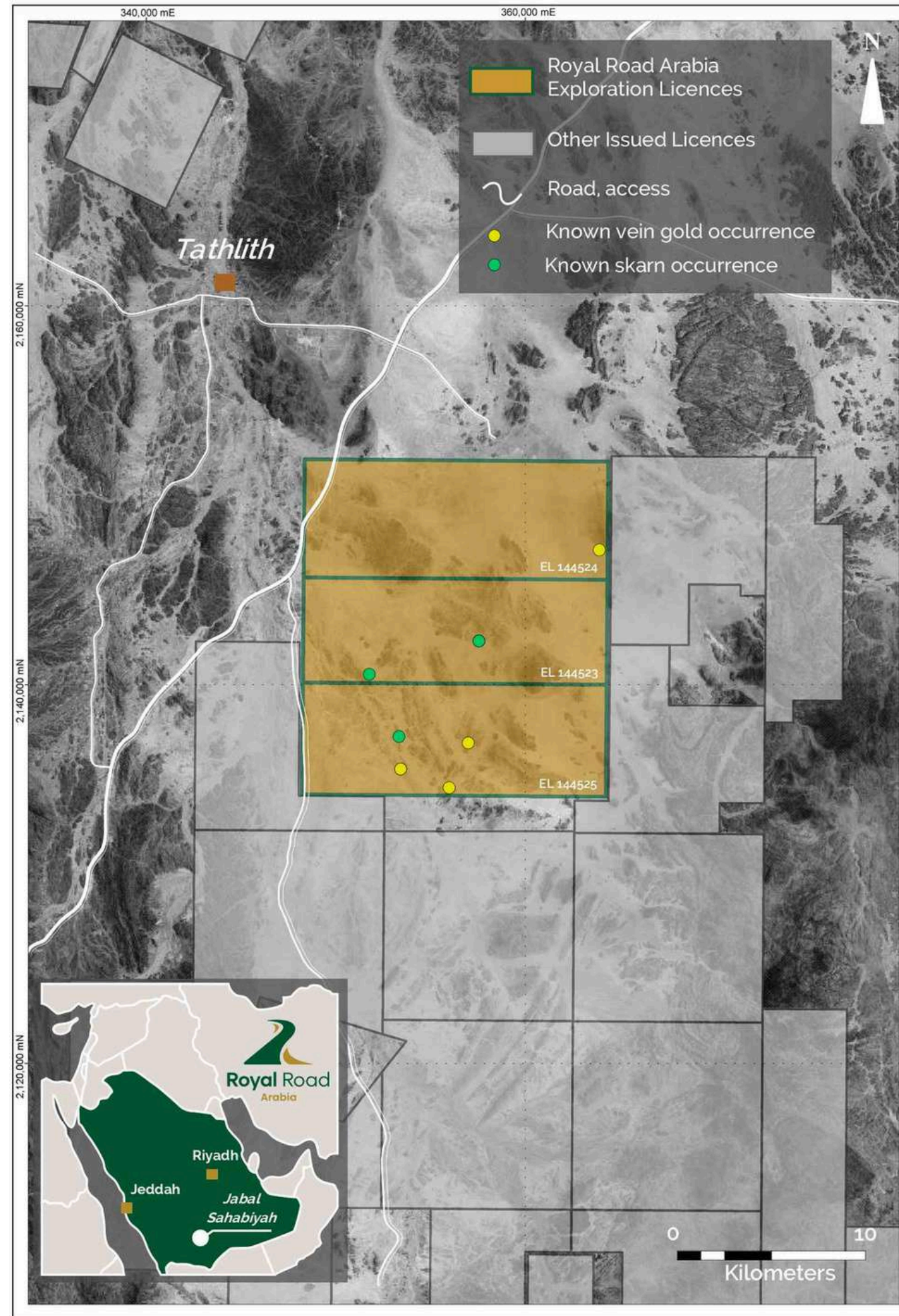


Figure 1. Location of Royal Road Arabia's Jabal Sahabiyah project area, other Mining Concessions, access and populated centers

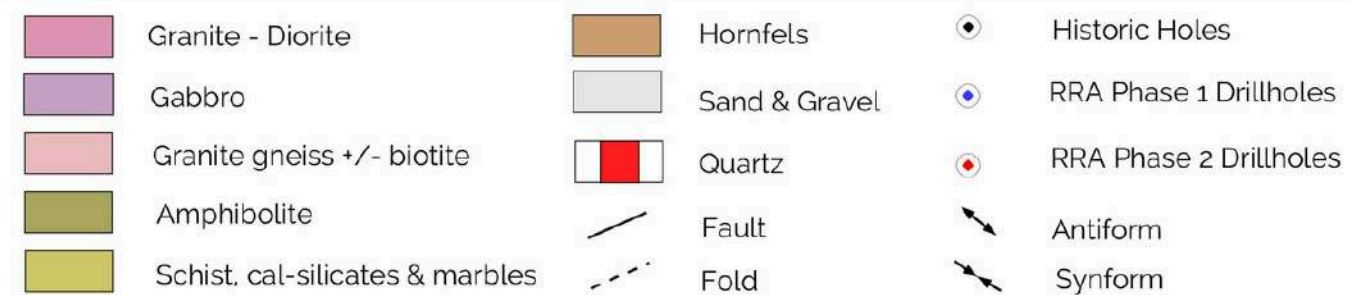
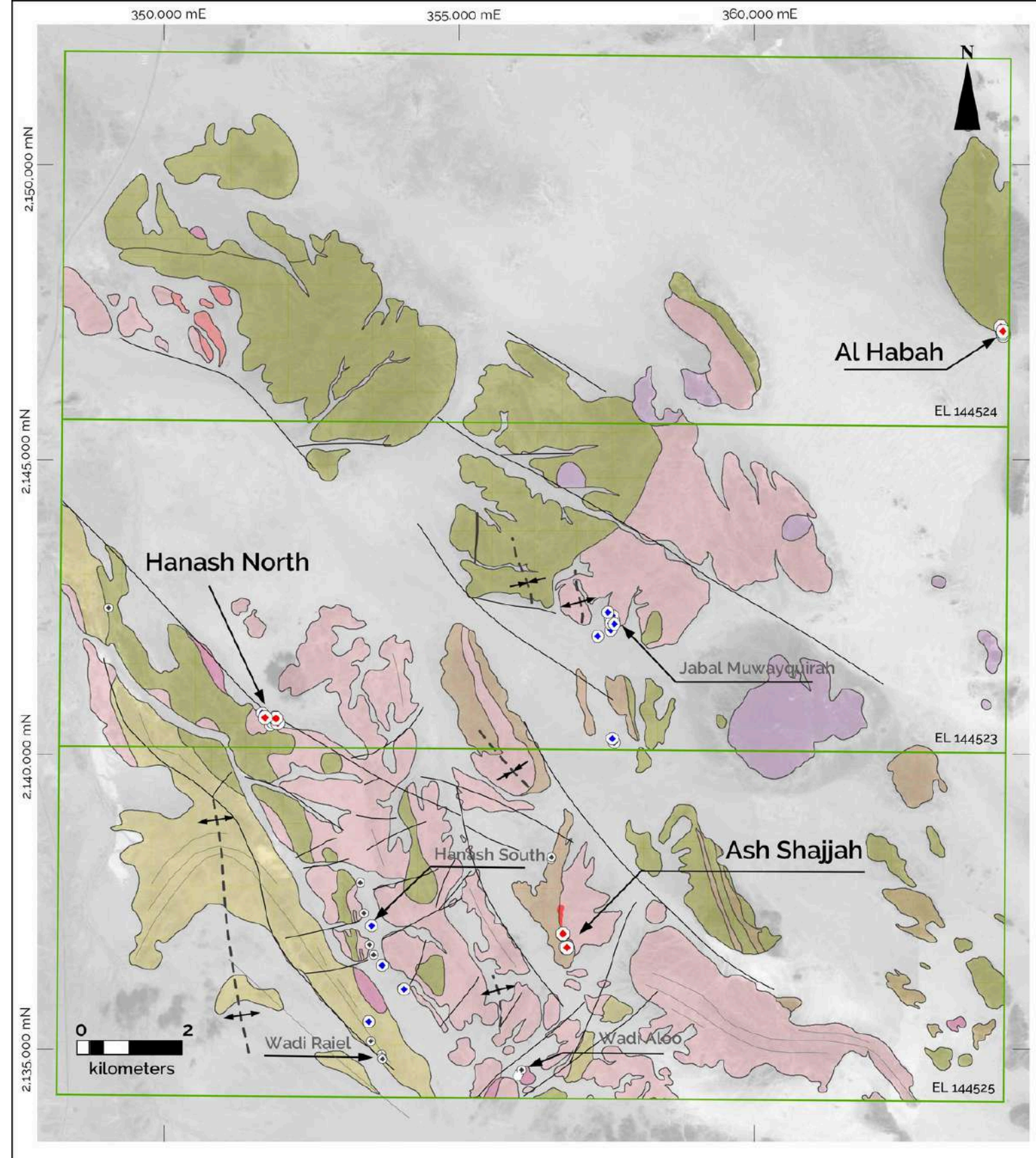


Figure 2. Jabal Sahabiyah project geology with prospect locations and recent Royal Road drill holes

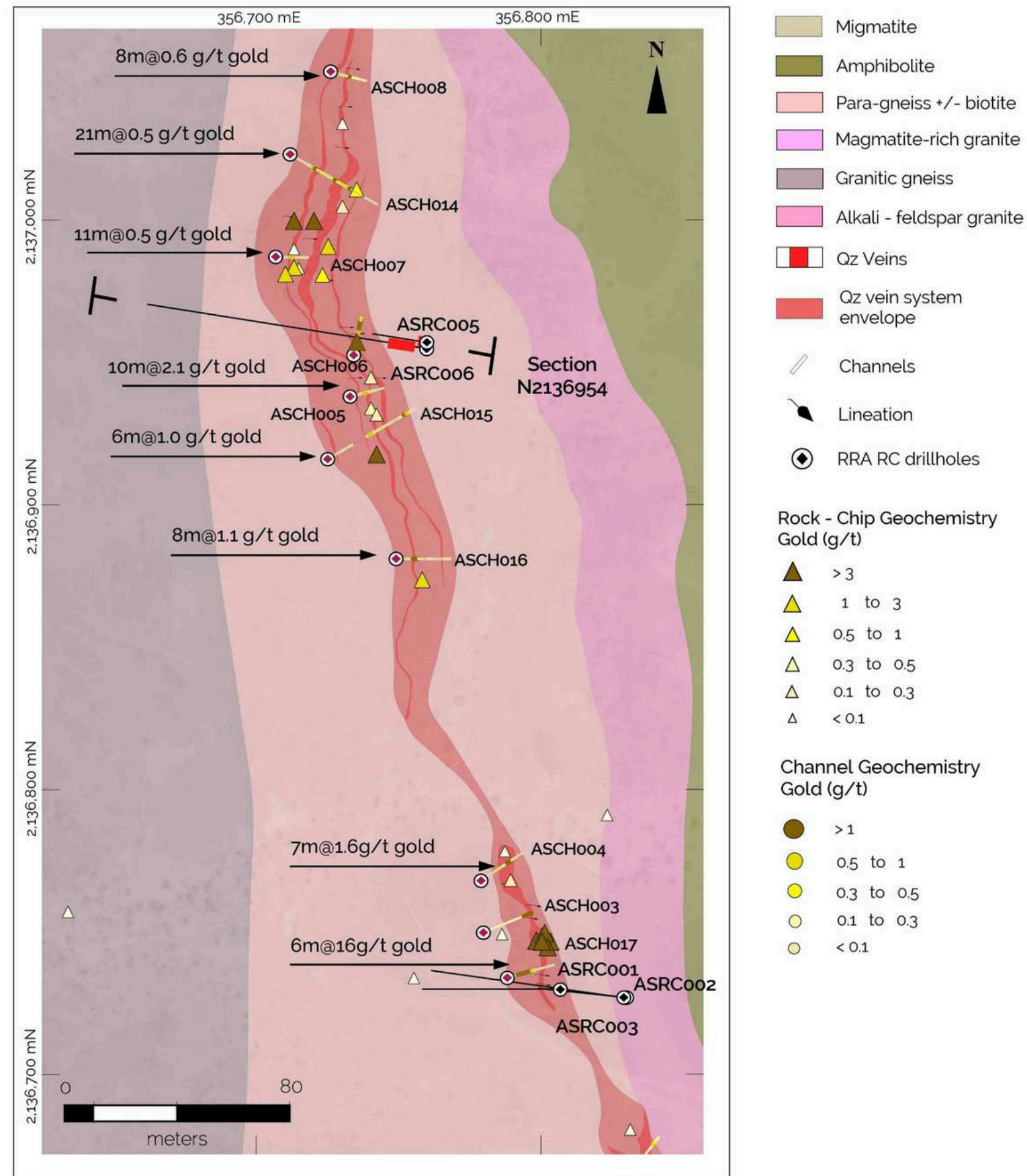


Figure 3. Local geological map of Ash Shajjah sheeted-vein gold prospect. Location of drill holes, rock-chip channels and results

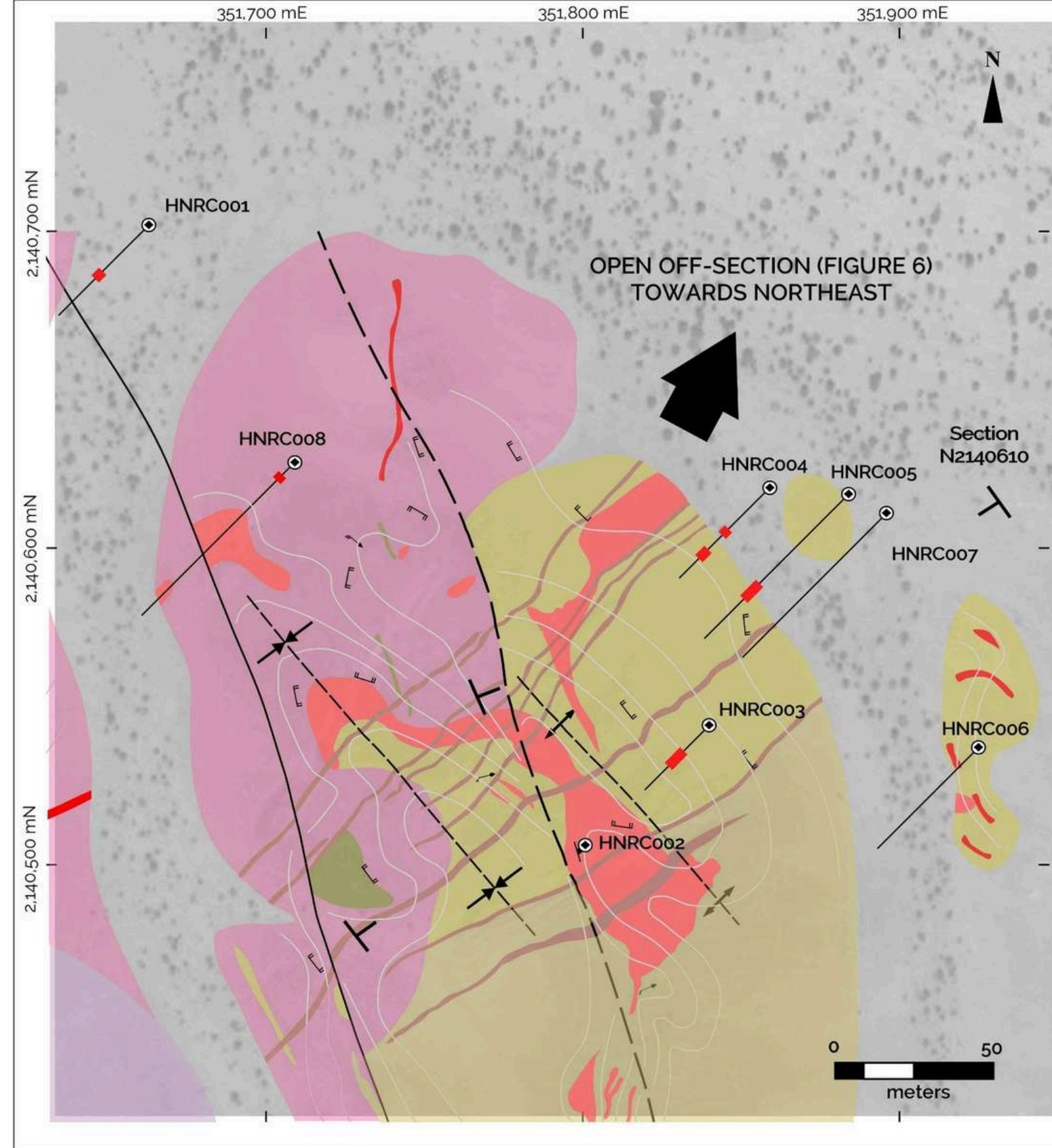


Figure 5. Geological map Hanash North Zinc-Polymetallic Skarn System. Drill hole locations

SW

NE

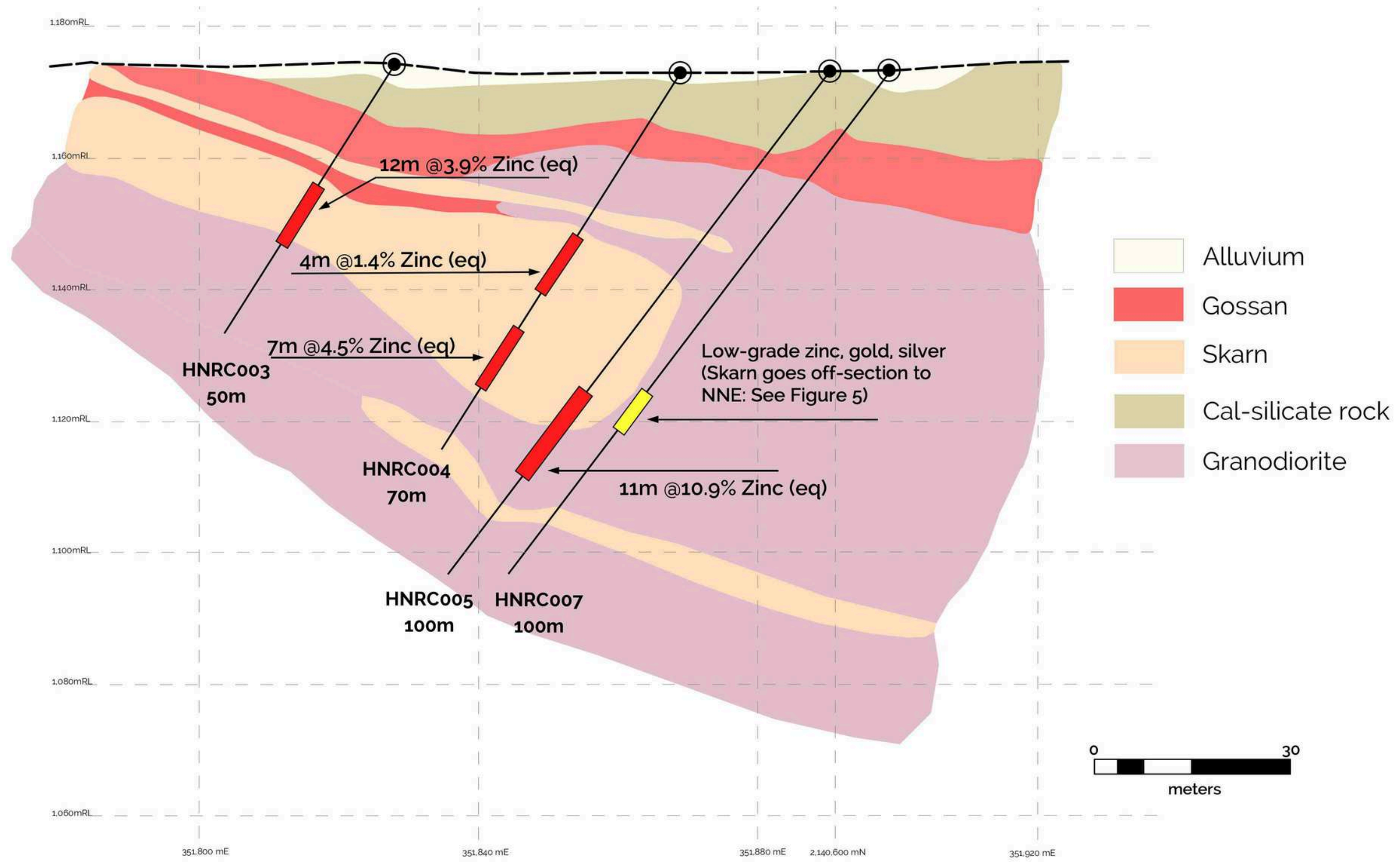
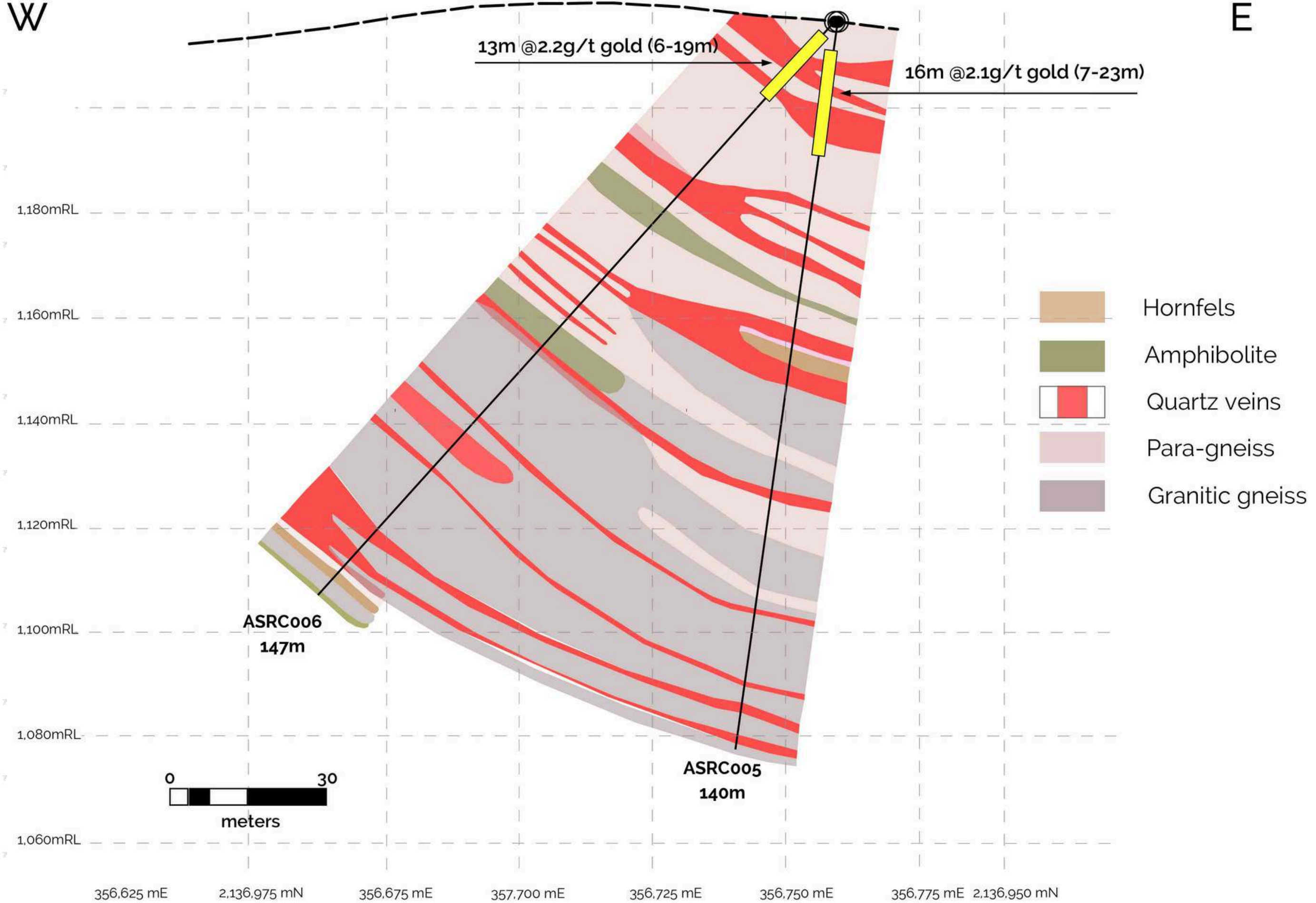
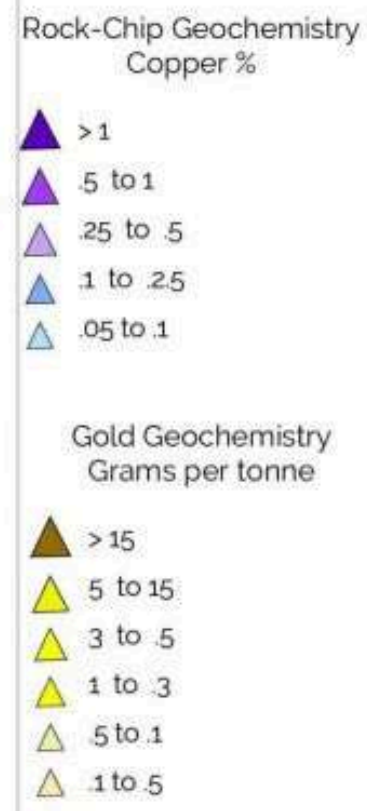
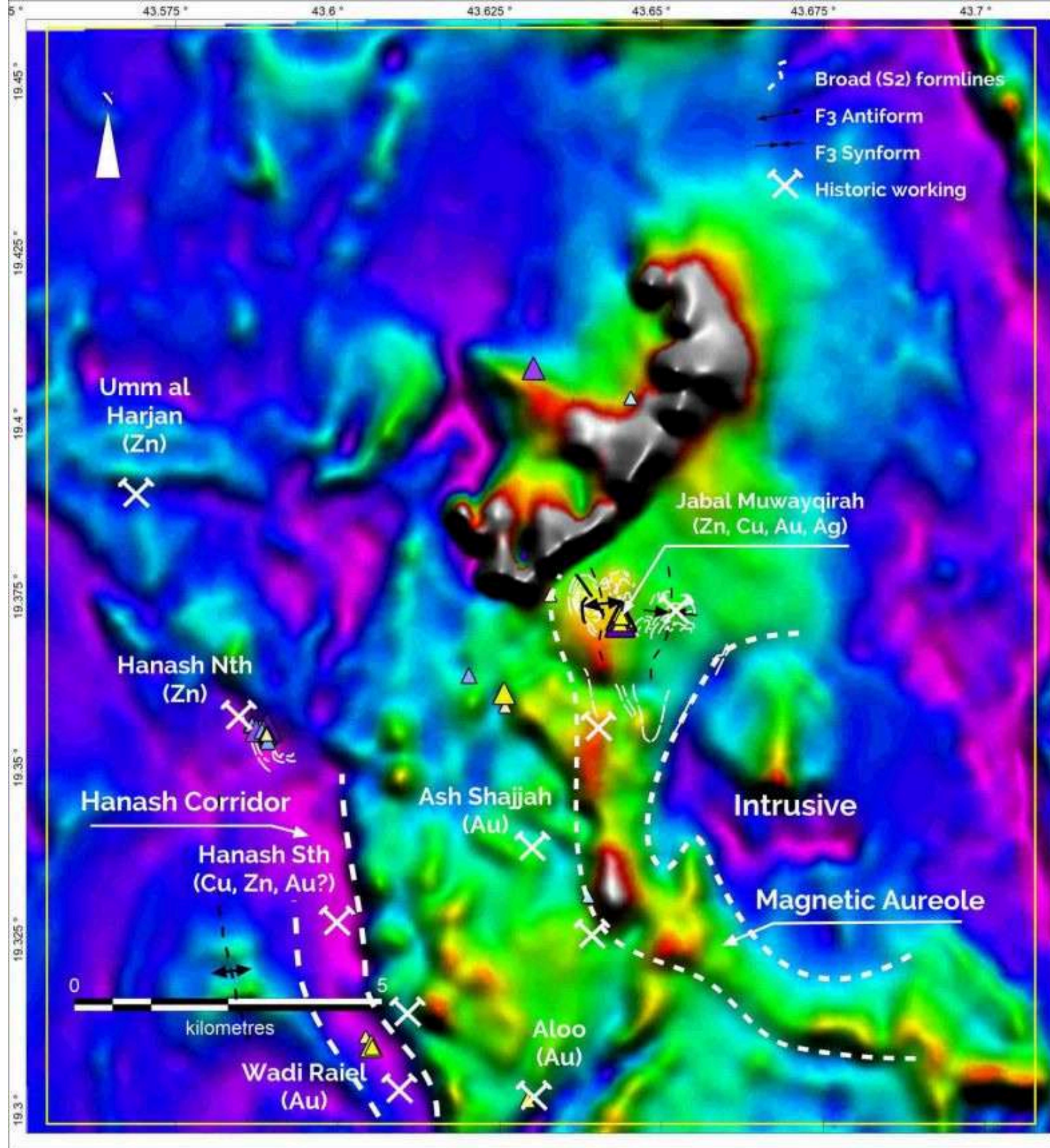
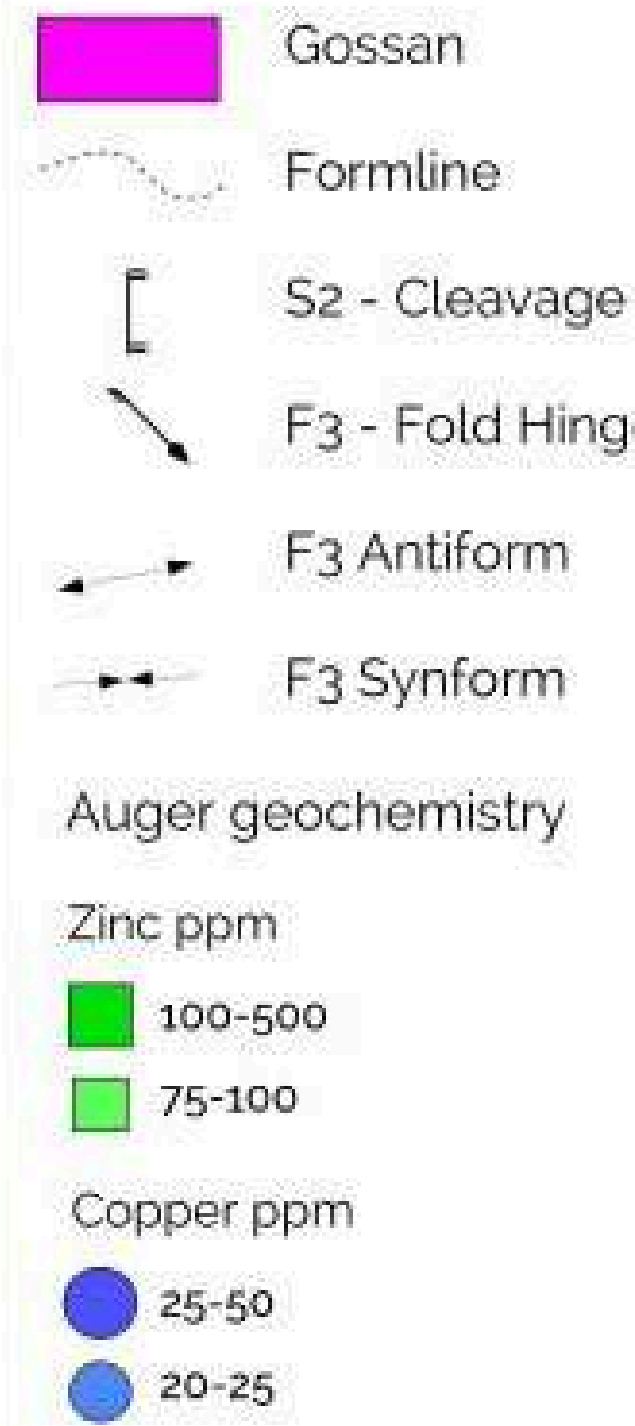
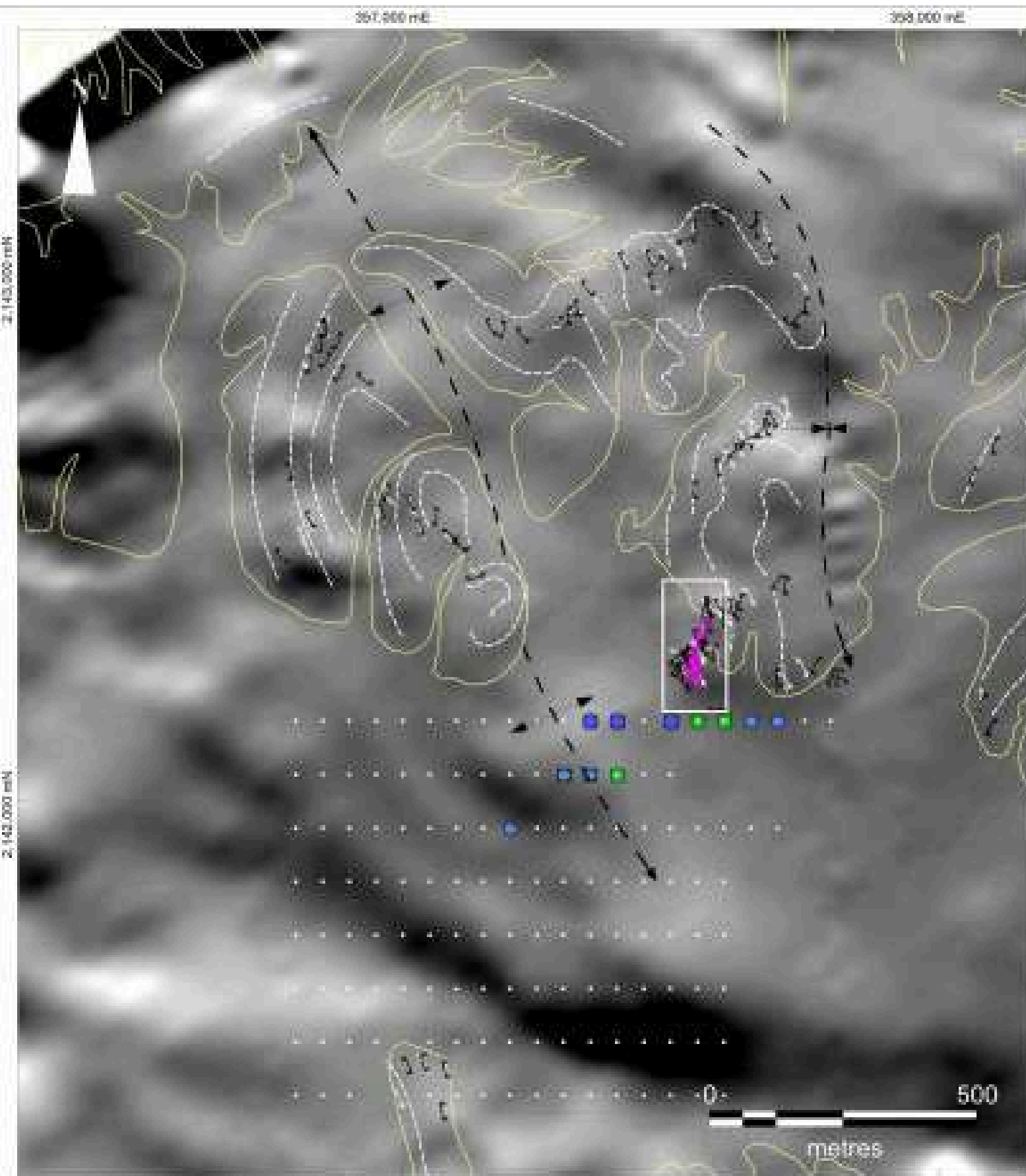


Figure 6. Geological cross-section N2140610 Hanash North Zinc-Polymetallic Skarn System (see also Figure 5)





Jabal Sahabiyah combined license areas and identified prospects on airborne magnetic data. RRA drill-preparation work is focused on the Hanash South, Jabal Muwayqirah and Hanash North prospect areas together with RAB-style drill lines across the magnetic aureole



Jabal Muwayqirah prospect area. A: Intensity image of drone-borne magnetic data showing doubly-plunging antiform (dome) and results of 3-meter auger sampling through alluvium. B: Satellite image of the same area highlighting the extent of alluvial cover and interpreted concealed drill-targets



Contact our Jersey Office

5 Seale Street
St Helier,
Jersey,
JE2 3QG

T: +44 (0) 1534 887 166

E: info@royalroadminerals.com

Follow us on

TORONTO STOCK
EXCHANGE



BÖRSE
FRANKFURT

OTC QB

